

SET-UP GUIDE

DAVIT CRANE

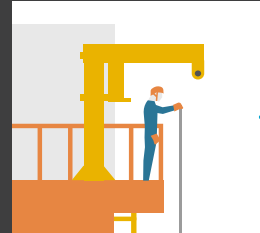
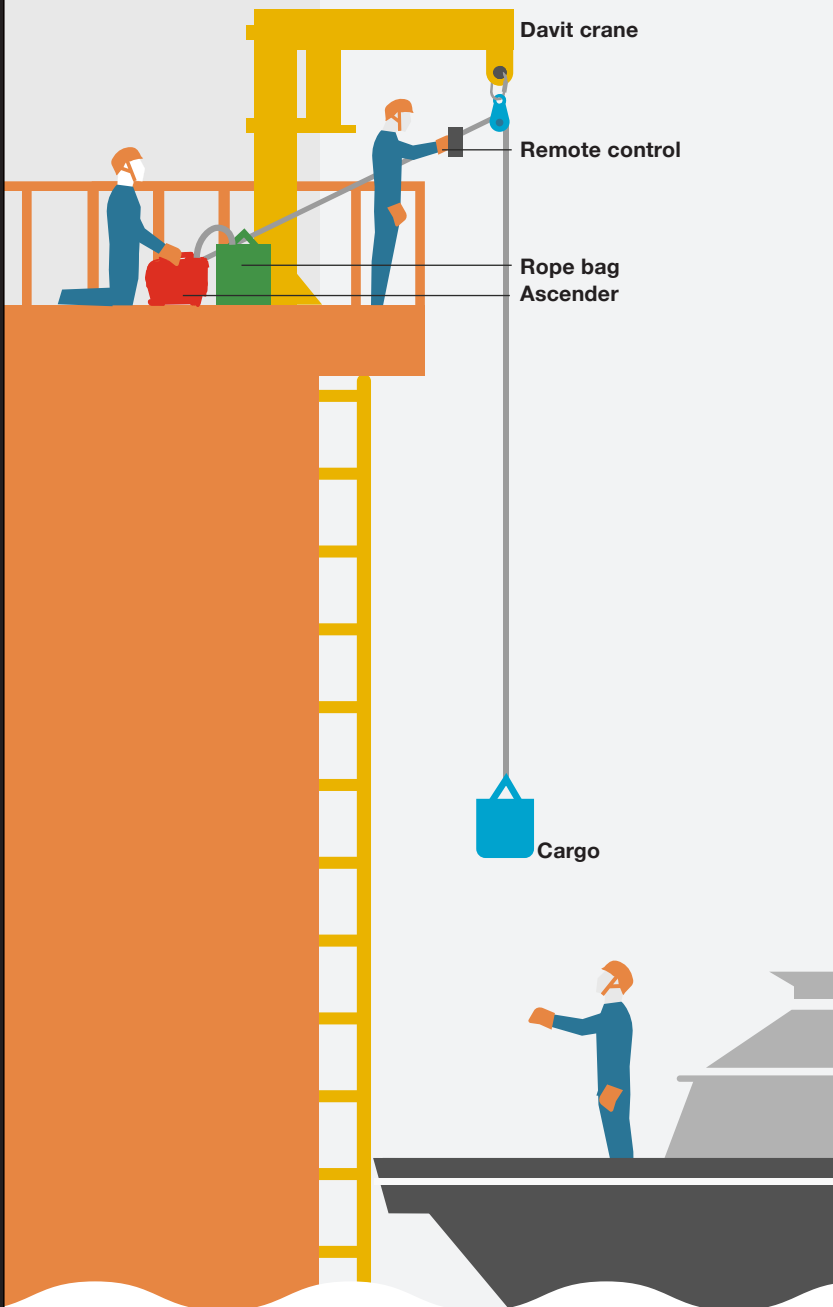


PLEASE NOTE: This document is a guide and must only be used as an addition to the user manual and proper training. This document is no lift-plan it is a basic layout of an SKYLOTEC ActSafe lifting system.



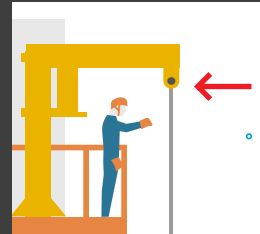
Replacement of Davit Crane during equipment transfer from transfer boat to Transition Piece

COMPLETE DAVIT CRANE SETUP



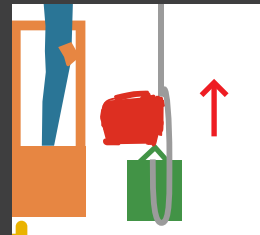
STEP 1

Lower the accessory cord from the TP to pull up the Ascender rope



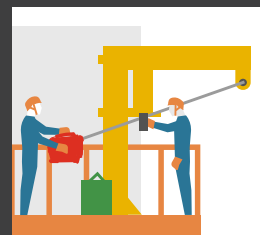
STEP 2

Hook the rope on the anchor on the Davit Crane



STEP 3

Mount the Ascender on the rope and connect the Rope Bag to the Ascender as shown. Additional rigging equipment can be put in the Rope Bag. Drive the Ascender up to the Davit Crane with the remote control



STEP 4

Pull the Ascender away from the Davit Crane so it can be rigged to the structure of the TP

THE SYSTEM IS NOW READY FOR OPERATION WITH:

- ✓ An operator at the Ascender, managing the rope, changing Batteries and, in case of emergency, operating the Emergency Stop or Emergency Descent
- ✓ A lifting supervisor holding the Remote Control in order to stop lifting operations to avoid unsafe lifting
- ✓ A slinger for attaching the load and/or signaling

SET-UP GUIDE

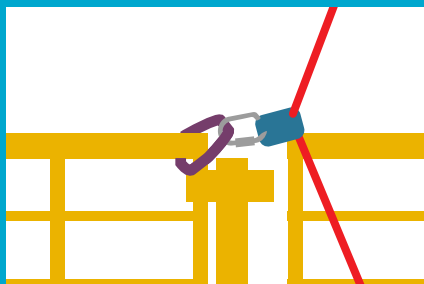
DAVIT CRANE



PLEASE NOTE: This document is a guide and must only be used as an addition to the user manual and proper training. This document is no lift-plan it is a basic layout of an SKYLOTEC ActSafe lifting system.

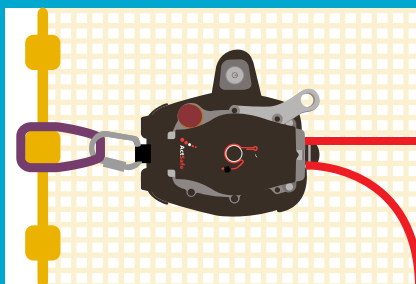
Rigging Solution

Below is an example of a possible rigging solution; exact rigging setup needs to be worked out for each particular TP model



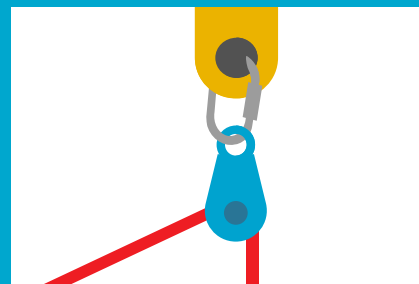
Rigging of Ascender

Below is a basic Ascender rigging that might need adjustment depending on the actual situation



Pulley and Davit Arm

The pulley on the davit is to be rigged that it can rotate freely



Equipment list

- SKYLOTEC ActSafe Battery Powered Ascender
- 11 mm ActSafe Equipment Lifting Rope (ELR) - suitable for lifting operations with ActSafe Ascenders
- Lifting Bags
 - a. for Rope and Rigging Equipment
 - b. for Lifting Equipment (can be multiple bags)
- 1t Lifting Strops (minimum 2, more can be needed depending on the rigging setup)
- Karabiners (with WLL mark) or Shackles (minimum 2, more can be needed depending on the rigging setup)
- Pulley (minimum 2, more can be needed depending on the rigging setup)

Safety considerations

- Always keep an eye on the load during lifting
- Always keep an Operator at the Ascender to control to rope, change batteries and in case of emergency operating the emergency stop or emergency descent
- No fixed connections between the TP and the transfer boat
- A rope cutter should with the lifting supervisor in case the load gets caught by the boat
- Do not lift loads over wind speeds of 12 m/s
- Reduce WLL when swell height increases (See section D.02 in manual)
- Do not lift loads in swell heights of 2 m or more

Variation

Pulley Deviation

